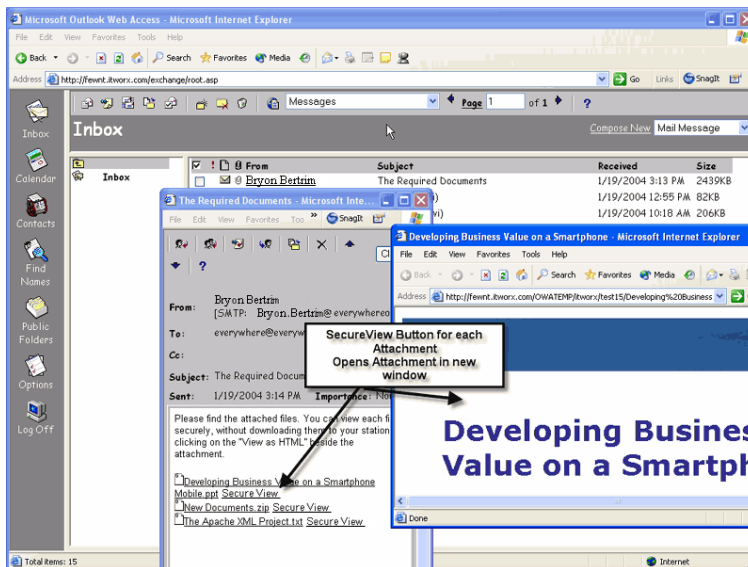


SecureView Enterprise 3.0 for Outlook Web Access, OWA 5.5, 2000 and 2003. Securely View OWA attachments. Shipping December 2004

SecureView is both a security and productivity product. As OWA users are presented with email attachments an additional button is exposed for each attachment. Left mouse clicking on this button causes the document to be converted to an HTML View-only file and presented to the user. When the view is closed or OWA session ends all traces of the SecureView are gone.

File Conversion

View, print, and search text for virtually any file, regardless of originating application, as an HTML file within the browser. Print Ready Format Attachments are presented in print-ready format. Selectable Conversion Mode Users can choose to view files in text only, graphic only, or rich mode.



Viewing Never Cached or written to disk

Attachments are converted to a non-cached HTML view, eliminating the risk of documents being left behind for others to view or use.

View-only Admin Controls Settings

Administrators can set security controls that enforce a security policy of view-only for OWA attachments. Eliminating the risk of sensitive and important documents being left in the cache

Right-click user Menus

Users can right-click on mouse to select type of conversion Rich text, text or graphics.

Support for Multi-language

Documents in all OWA languages are supported and convertible.

Supports All Browsers types

Usage is not limited by browser type.

Server-side Conversion and transformation

100% client-less no ActiveX or Java applets are used are required with the browser, as attachment file transformation is performed at the SecureView server.

Fully Searchable HTML View

Users may search text within any SecureView file View.

Automatic Table of Contents Created

A table of contents is automatically created and hyperlinked so users can quickly navigate through the document.

Enterprise Scalability and load balancing

SecureView's viewing transformation engine scales to the largest concurrent user base.

You are able to add additional SecureView servers

Over 350 Mime file types are supported including Word, XL, Lotus, graphics etc. See attached appendix A for complete list.

Security Policy

Grant View only access rights based on IP address, browser type, or host type based on resident key on remote client. Additional forms of authentication of user and host maybe applied.

Additional Mime types.

Mime types are added on a market driven basis. An API is available to create custom filters. Additional Mime types may also be developed on a custom basis.

Interfacing to SecureView to other applications

It is possible to interface to other applications using SOAP. SecureView This industry-leading technology converts documents to all major Web and wireless markup formats, including HTML, XHTML, WML and cHTML.

The current licensing covers utilization via OWA and FileWay only but can be negotiated.

Customer References

Verizon Wireless, Yahoo

SecureView 1.0 Supported File types

Standard Word Processing Formats	
ANSI Text (7 & 8 bit)	All versions
ASCII Text (7 & 8 bit versions available)	All versions
Corel WordPerfect for Windows	Versions through 10
DEC WPS Plus (DX)	Versions through 4.0
DEC WPS Plus (WPL)	Versions through 4.1
DisplayWrite 2 & 3 (TXT)	All versions
DisplayWrite 4 & 5	Versions through 2.0
Enable	Versions 3.0, 4.0 and 4.5
First Choice	Versions through 3.0
IBM FFT	All versions
IBM Revisable Form Text	All versions
IBM Writing Assistant	Version 1.01
JustWrite	Versions through 3.0
Legacy	Versions through 1.1
Lotus AMI/AMI Professional	Versions through 3.1
Lotus Manuscript	Versions through 2.0
Lotus WordPro (Win32 platforms) <i>Note: The Lotus WordPro filter is for Win32 on the Intel platforms only, and is provided to the Licensee "as is", without any representations or warranties.</i>	SmartSuite 96, 97 and Millennium and Millennium 9.6
Lotus WordPro (Non-Windows platforms - text only)	SmartSuite 97, Millennium, and Millennium 9.6
MacWrite II	Version 1.1
MASS11	Versions through 8.0
Microsoft Rich Text Format (RTF)	All versions
Microsoft Word for DOS	Versions through 6.0
Microsoft Word for Macintosh	Versions 4.0 through 2001
Microsoft Word for Windows	Versions through 2002
Microsoft WordPad	All versions
Microsoft Works for DOS	Versions through 2.0
Microsoft Works for Macintosh	Versions through 2.0
Microsoft Works for Windows	Versions through 4.0
Microsoft Write	Versions through 3.0
MultiMate	Versions through 4.0
Navy DIF	All versions
Nota Bene	Version 3.0
Novell Perfect Works	Version 2.0
Novell WordPerfect for DOS	Versions through 6.1
Novell WordPerfect for Mac	Versions 1.02 through 3.0
Novell WordPerfect for Windows	Versions through 7.0
Office Writer	Version 4.0 to 6.0
PC-File Letter	Versions through 5.0

PC-File+ Letter	Versions through 3.0
PFS:Write	Versions A, B, and C
Professional Write for DOS	Versions through 2.1
Professional Write Plus	Version 1.0
Q&A for DOS	Version 2.0
Q&A Write for Windows	Version 3.0
Samna Word	Versions through Samna Word IV+
SmartWare II	Version 1.02
Sprint	Version 1.0
StarOffice Write (UNIX and Windows – text extraction only)	Version 5.2
Total Word	Version 1.2
Unicode Text	All versions
Volkswriter 3 & 4	Versions through 1.0
Wang PC (IWP)	Versions through 2.6
WordMARC	Versions through Composer Plus
WordStar 2000 for DOS	Versions through 3.0
WordStar for DOS	Versions through 7.0
WordStar for Windows	Version 1.0
XyWrite	Versions through III Plus

Desktop Publishing Formats

Adobe FrameMaker (MIF, text only)	Version 6.0
-----------------------------------	-------------

International Word Processing Formats

JustSystems Ichitaro	Versions 5.0, 6.0, 8.0, 9.0 and 10.0
----------------------	--------------------------------------

Spreadsheet Formats

Enable	Versions 3.0, 4.0 and 4.5
First Choice	Versions through 3.0
Framework	Version 3.0
Lotus 1-2-3 (DOS & Windows)	Versions through 5.0
Lotus 1-2-3 (OS/2)	Versions through 2.0
Lotus 1-2-3 Charts (DOS & Windows)	Versions through 5.0
Lotus 1-2-3 Charts (OS/2)	Versions through 2.0
Lotus 1-2-3 for SmartSuite	SmartSuite 97, Millennium, and Millennium 9.6

Lotus Symphony	Versions 1.0,1.1 and 2.0
Microsoft Excel Charts	Versions 2.x through 7.0
Microsoft Excel for Macintosh	Versions 3.0 through 4.0, 98, 2001
Microsoft Excel for Windows	Versions 2.2 through 2002
Microsoft Multiplan	Version 4.0
Microsoft Windows Works	Versions through 4.0
Microsoft Works (DOS)	Versions through 2.0
Microsoft Works (Macintosh)	Versions through 2.0
Mosaic Twin	Version 2.5
Novell Perfect Works	Version 2.0
PFS:Professional Plan	Version 1.0
QuattroPro for DOS	Versions through 5.0
QuattroPro for Windows	Versions through 10
SmartWare II	Version 1.02
StarOffice Calc (UNIX and Windows – text extraction only)	Version 5.2
SuperCalc 5	Version 4.0
VP Planner 3D	Version 1.0

Standard Graphics Formats	
Binary Group 3 Fax	All versions
BMP (including RLE, ICO, CUR & OS/2 DIB & OS/2 Warp)	Windows
CDR (if TIFF image is embedded in it)	Corel Draw versions 2.0 - 9.0
CGM - Computer Graphics Metafile	ANSI, CALS, NIST, Version 3.0
DCX (multi-page PCX)	Microsoft Fax
DRW - Micrografx Designer	Version 3.1
DRW - Micrografx Draw	Versions through 4.0
DXF (Binary and ASCII) AutoCAD Drawing Interchange Format	Versions through 14
EMF	Windows Enhanced Metafile
EPS Encapsulated PostScript	If TIFF image is embedded in it
FPX - Kodak Flash Pix	No specific format
GIF - Graphics Interchange Format	Compuserve
GP4 - Group 4 CALS Format	Type I and Type II
HPGL - Hewlett Packard Graphics Language	Version 2.0
IMG - GEM Paint	No specific version
JFIF (JPEG not in TIFF format)	All versions
JPEG – Joint Photographic Experts Group format (includes EXIF)	All versions
PBM - Portable Bitmap	No specific version
PCD - Kodak Photo CD	Version 1.0
PCX Bitmap	PC Paintbrush

Perfect Works (Draw)	Novell version 2.0
PGM - Portable Graymap	No specific version
PIC - Lotus 1-2-3 Picture File Format	No specific version
PICT1 & PICT2 (Raster)	Macintosh Standard
PNG - Portable Network Graphics Internet Format	Version 1.0
PNTG	MacPaint
PPM - Portable Pixmap	No specific version
Progressive JPEG	No specific version
PSP - Paintshop Pro	Versions 5.0, 5.0.1
PSP - Paintshop Pro 6 (Win32 only)	Version 6.0
SDW	Ami Draw
Snapshot (Lotus)	All versions
SRS - Sun Raster File Format	No specific version
Targa	Truevision
TIFF	Versions through 6
TIFF CCITT Group 3 & 4	Fax Systems
VISO	Visio 4 (page preview only), 5, 2000, 2002
WBMP	No specific version
WMF	Windows Metafile
WordPerfect Graphics (WPG and WPG2)	Versions through 2.0
XBM - X-Windows Bitmap	x10 compatible
XPM - X-Windows Pixmap	x10 compatible
XWD - X-Windows Dump	x10 compatible

High-End Graphics Formats	
Note: The Licensee acknowledges and agrees that the following High-End Graphics Formats are provided to the Licensee "as is", without any representations or warranties.	
AI - Adobe Illustrator File Format	Versions through 7.0, 9.0
CDR - Corel Draw	Versions through 8.0
CMX - Corel Clip Art Format	Versions 5 through 6
DSF - Micrografx Designer	Windows 95, Version 6.0
DWG - AutoCAD Native Drawing Format	Versions 12 through 14
FMV - FrameMaker graphics	Vector & raster through version 5.0
GDF - IBM Graphics Data Format	Version 1.0
GEM - Graphics Environment Manager Metafile	Bitmap and Vector
IGES - Initial Graphics Exchange Specification	Version 5.1
MET - OS/2 PM Metafile	Version 3.0
PDF - Portable Document Format	Acrobat version 2.1, 3.0, 4.0, 5.0 including Japanese PDF
PIF - IBM Picture Interchange Format	Version 1.0
PS - Postscript	Level 2

PSD - Adobe Photoshop File Format	Version 4.0
RND - AutoShade Rendering File Format	Version 2.0

Presentation Formats	
Corel Presentations	Versions 8.0 through 10
Novell Presentations	Versions 3.0 and 7.0
Harvard Graphics for DOS	Versions 2.x & 3.x
Harvard Graphics	Windows versions
Freelance for Windows	Version 1.0, 2.0, 96, 97, Millennium, and Millennium 9.6
Freelance for OS/2	Versions through 2.0
Microsoft PowerPoint for Windows	Versions through 2002
Microsoft PowerPoint for Macintosh	Versions 4.0, 98, 2001
StarOffice Impress (UNIX and Windows – text extraction only)	Version 5.2

Compressed and Encoded Formats	
GZIP	No specific version
LZA Self Extracting Compress	No specific version
LZH Compress	No specific version
Microsoft Binder	Version 7.0, Binder 97
MIME (text mail)	No specific version
UNIX Compress	No specific version
UNIX TAR	No specific version
ZIP	PKWARE versions through 2.0