



Mimosa NearPoint for Microsoft Exchange Server

“NearPoint was the perfect solution for UTLA to solve our Exchange backup recovery and archiving challenges. We quickly realized that as an all-in-one solution, its seamless audit functionality let us establish an easy, comprehensive e-mail auditing process while respecting each employee’s privacy.”

*— Don Carlos, Director of
Information Services & Technology
United Teachers Los Angeles*

NearPoint Offers:

- Vastly Improved Recovery Time — minutes, not hours or days
- Elimination of backup window via exclusive One Pass Protection™
- Increased end-user productivity with intuitive, self-service search/restore of archived data
- Optimization of storage for Exchange by migration of messages, eliminating need for .PST’s
- Instant access to archived data for internal or external audit
- Enforcement of e-mail retention and disposition policies for policy or compliance purposes
- Re-creation of information states at points in time, for legal investigation

Immediate Fine-Grained Recovery & Self-Service Access™ for Microsoft® Exchange Server

E-mail has become the number one method of business communication, exceeding even the telephone in importance within an organization. It is a key application in corporate data centers and e-mail servers contain an increasing percentage of corporate data assets. As a result, e-mail has become the mission-critical application for enterprises. With this growth in importance comes an increasingly daunting challenge for IT administrators – ensuring that in the event of errors or failures, e-mail can be recovered and restored as quickly as possible.

Apart from organizational dependency on messaging, there are new laws and regulations that require organizations to treat e-mail data as business records. IT must support corporate efforts to comply with these evolving regulations. A system is needed to provide the proper archiving of e-mail and subsequent e-mail discovery in the event of an investigation. Managing the proper retention and disposition of corporate e-mails is one of the largest liabilities facing IT today.

The growing use of e-mail by corporations is resulting in an explosion of storage on Exchange Servers. As the primary conduit for distribution of creative output, e-mail is often laden with content-rich attachments that vastly increase the storage requirements associated with Exchange services. As messages and attachments continue to grow in size, there is an acute need for storage optimization of e-mail servers.

NearPoint: Unified Solution for Exchange Storage Optimization, Information Recovery and Policy Regulatory Compliance Needs

Mimosa NearPoint Data Management Solution for Microsoft Exchange Server is the industry’s only comprehensive data management solution for Microsoft Exchange. It unifies fine-grained and immediate recovery, archival, policy compliance, and user self-service access to all historical e-mail. The NearPoint solution is comprised of data protection, mailbox extension and archiving functions.

The Mimosa NearPoint software solution is based on standard Microsoft technologies, and runs on a standard Intel server. It is an application-intelligent solution providing deep integration with Exchange and Outlook. NearPoint is disk-based and leverages commodity storage, such as SATA RAID and NAS appliances, to provide continuous data protection and easy access to archived data from multiple Exchange Servers. Deployment is effortless as there is zero foot print on Exchange Servers and desktops. There are no agents or drivers to install on the mission-critical Exchange Server and there is no need to deploy clients to each desktop/laptop within the organization.

Administrators perform immediate restores and configure policies using the standard Microsoft Management Console. Mimosa provides users and auditors instant search and access to e-mail that has been protected, archived, and extended via a standard Microsoft Outlook or Outlook Web Access user interface.

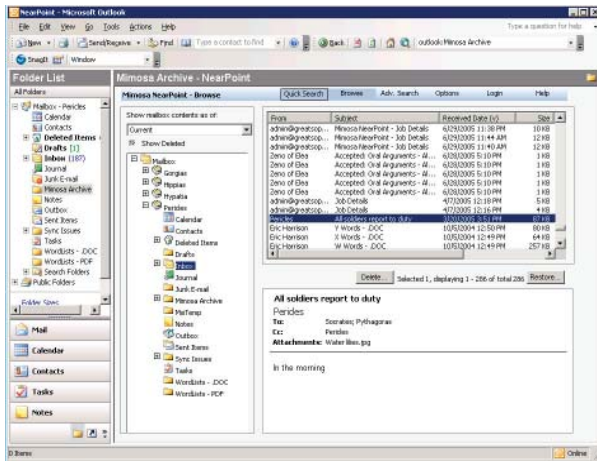


Figure 1: Seamless Self-Service Restore via Outlook

Immediate Recovery for Any Scope of Exchange Data

The Mimosa solution leverages exclusive technology that allows the NearPoint server to manage a copy of the Exchange databases that then continuously shadows the Business users are empowered by the NearPoint solution, enabling fingertip access to information across time, resulting in improved productivity and higher quality of decision-making. Self-service recovery is intuitive and offers easy access to accidentally-deleted and old messages from within Outlook or Outlook Web Access. Since the data is full-text indexed, it's a snap to search & retrieve messages or items, irrespective of where they are stored.

“Mimosa NearPoint will quickly become the Exchange Administrator’s best friend.”

— Lee Benjamin
The ExchangeGuy
Consulting

Mailbox Management Reduces Exchange Storage

With NearPoint Mailbox Extension, administrators define policies that allow mailboxes on the Exchange Servers to be extended to the NearPoint server, and for messages to be migrated using parameters such as message size and age and mailbox size watermarks. These policies allow Mimosa to replace messages within those established criteria with a stub file that points to the copy of the message residing on the NearPoint server. Messages that have been extended appear in user folders as normal messages but with a new icon. Users have completely seamless access to migrated messages. They double-click on an extended message header to view the message. Operations such as forward, delete, reply, and move perform as they would with local message copies.

Exchange Archiving Assures Data Integrity & Expedited Discovery

Proper e-mail archiving is as critical as data protection for corporations in virtually every vertical industry. Mimosa NearPoint enables corporate e-mail compliance with existing and evolving rules and regulations. Discovery of e-mails for investigative purposes, whether internal or external, is a critical task that must be executed quickly and accurately. The lifecycle of e-mail as a business record must be managed. The proper retention and disposition of e-mail requires that archived message copies must remain tamper resistant.

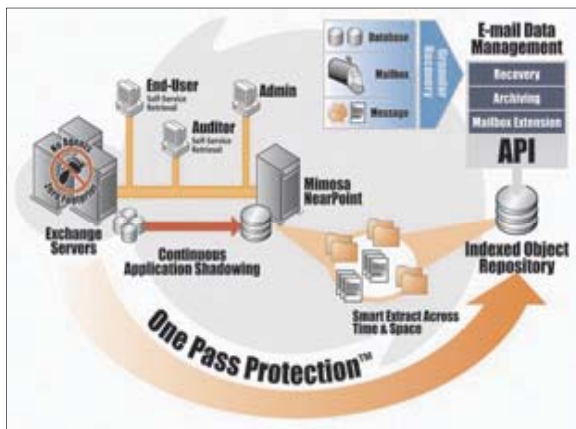


Figure 2: NearPoint Deployment Advantage

“No-Load” NearPoint Deployment Advantage™

The NearPoint software solution is designed to make deployment effortless. NearPoint runs on any standard Windows Server and leverages commodity disk storage as a common data repository for data protection, mailbox extension, and archiving. The overall solution is built with ease-of-use and ease of deployment as key design goals. There is zero footprint on production servers – the NearPoint solution accomplishes all tasks without installing agents or file system drivers on the Exchange Server.

About Mimosa Systems

Mimosa Systems, Inc. delivers next-generation e-mail data management solutions with Mimosa NearPoint™ for Microsoft® Exchange Server. NearPoint unifies data protection, mailbox extension and archiving in a single solution, assuring email continuity and regulatory compliance.

NearPoint Expands to Meet Critical Needs

Optional add-on features for NearPoint include the Disaster Recovery Option and the PST Archiving Option. The Disaster Recovery Options provides a higher level of disaster protection with remote replication of NearPoint and Exchange data. The PST Archiving Option eliminates the need for PST files by uploading the contents of existing PST files directly into NearPoint.

