

“.PST’s can quickly get out of control.

The right way to re-gain control is to upload .PST file contents into an e-mail archive, where they can be protected and easily searched, even remotely – and do so without adding to Exchange storage.

NearPoint PST Archiving Option now lets users do just that.”

— Lee Benjamin
ExchangeGuy Consulting

Features:

- User & Administrator control of .PST uploads
- Global single-instance storage
- Global search & retrieve across all .PST’s
- No-impact on Exchange server

Benefits:

- Centrally manage all .PST data in an indexed email archive
- Self-Service Access for legal discovery and individual search and retrieval
- Eliminate need for .PST files
- Reduce storage demand on desktops and file servers

Effective .PST File Management

The use of Microsoft Office Outlook Personal Folders Files (.PST files) creates one of the most difficult challenges for Exchange Administrators. To stay below mailbox quota limits, users turn to off-loading messages and attachments from Exchange Server to local .PST files – storing them on laptops, office desktops, or even on home computers. While this approach may keep quotas in check, it leads to a host of new problems.

First, it means that your valuable corporate intellectual property is widely distributed beyond your immediate control. Few companies have implemented a data protection strategy down to the desktop level, exposing this intellectual property to data loss due to hardware failure or lost/stolen laptops. Second, managing e-mail data contained in .PST files for compliance and legal discovery across this wide distribution can be very costly and sometimes impossible to search through with 100% confidence.

The dilemma is how to manage .PST files in a manner that supports your organization’s need for e-mail data retention and disposition, legal discovery and compliance, all while remaining accessible for business users and minimizing storage requirements on the Exchange Server.

NearPoint PST Archiving Option Solves the Dilemma

The PST Archiving Option allows .PST files to be uploaded directly into the NearPoint archive. The upload process is user controlled and accessible via NearPoint Self-Service Access™ in Outlook and the NearPoint Administrative Console. Once .PST files are loaded into the NearPoint archive, the .PST message data can be managed by existing retention and disposition policies, and quickly searched through by auditors for legal discovery. Data is also seamlessly accessible to all business end users (Figure 1).

With NearPoint PST Archiving Option, Administrators can eliminate the need for .PST files all together, while providing users with better, faster access to all e-mail data.

No Exchange Impact

The NearPoint PST Archiving Option has no impact on Exchange performance, because .PST files are imported directly to the NearPoint server – not the Exchange server.

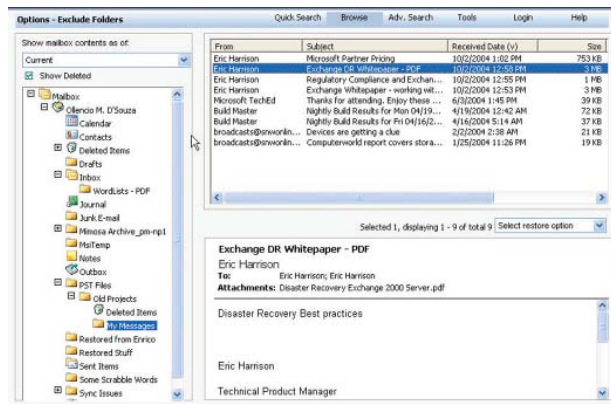


Figure 1: Business users have full searchable access to all uploaded .PST file messages directly from Outlook.

Eliminate .PSTs – Easy as 1-2-3

Mimosa NearPoint and the PST Archiving Option combine to eliminate the need for .PST files. Here's how it works.

- Step 1:** Individual users quickly upload existing .PST files using the NearPoint Self-Service Access™ graphical interface in Outlook. Administrators can also upload .PST files directly into NearPoint using the NearPoint/Administrative Console to reinforce individual user progress.
- Step 2:** The upload process first copies the .PST file onto the NearPoint server bypassing Exchange Server. Each .PST message is processed for single-instance and indexed and stored in the NearPoint archive.
- Step 3:** After .PSTs are uploaded, leverage NearPoint Mailbox Extension to eliminate future need for .PST files. E-mail that was once widely distributed on every desktop is now centrally managed and can be searched in seconds to support legal discovery, compliance, and individual search and retrieval.

Delivers Meaningful Benefits

Feature	Benefit
.PST Archiving Option	
All .PST Archiving is performed 'off-host'	All .PST uploading and processing is performed 'off-host' on the NearPoint Server with no impact on Exchange server.
All .PST message data is stored 100% in NearPoint	All .PST message data is stored in NearPoint archive; no short-cuts or message stubs are placed in Exchange.
Direct Access to .PST data using Self-Service Access™	Mimosa Archive allows self-service access to all .PST message data making it highly intuitive to access and search archived .PST message data via Outlook. No user training is required.
Global single-instance storage	Solve the massive duplication problem of data contained in .PST files when NearPoint archives only a single copy of each message header, body, and attachment uploaded from .PST files.
Global search and retrieval across all .PST's	Users and auditors can search all .PST message data quickly in a single pass. Exchange can only search individual .PST's one-at-a-time.
Users and Administrators initiate .PST upload	The upload process is managed by business users who can plan around their own schedule and who know the location of their .PST files; optionally the upload process can be performed by Administrators.
Integration with retention and disposition policies	Consistent application of organization retention and disposition policies ensures better compliance and reduces the risk of fines and penalties.
Intuitive .PST folder display	User's who rely on folders will appreciate seeing the folder names and hierarchy contained in the .PST files preserved identically in the NearPoint archive.

Add NearPoint PST Archiving Option Today!

Contact us today to learn more about NearPoint and the .PST Archiving Option by e-mail at sales@mimosasystems.com, or by calling 408.970.9070.

"Mimosa NearPoint is a 'win-win' for people across our organization...As it eliminates the need for .PST files, it also streamlines the Exchange administrative duties."

— Tim White
 Director of Information Services
 e.Republic, Inc.

About Mimosa Systems

Mimosa Systems, Inc. delivers next-generation e-mail data management solutions with Mimosa NearPoint™ for Microsoft® Exchange Server. NearPoint unifies data protection, mailbox extension and archiving in a single solution, assuring email continuity and regulatory compliance.

