

# What's New

## *Discovery Attender*<sup>®</sup>

Version 3.7



Fleximation Systems Inc  
5925 Airport Road, Suite 200  
Mississauga, Ontario Canada  
L4V 1W1

[www.flexnet.com](http://www.flexnet.com)  
[sales@flexnet.com](mailto:sales@flexnet.com)

# What's New with Discovery Attender®

## OVERVIEW

This document is intended to provide a preview of new features introduced in version 3.7 of Discovery Attender.

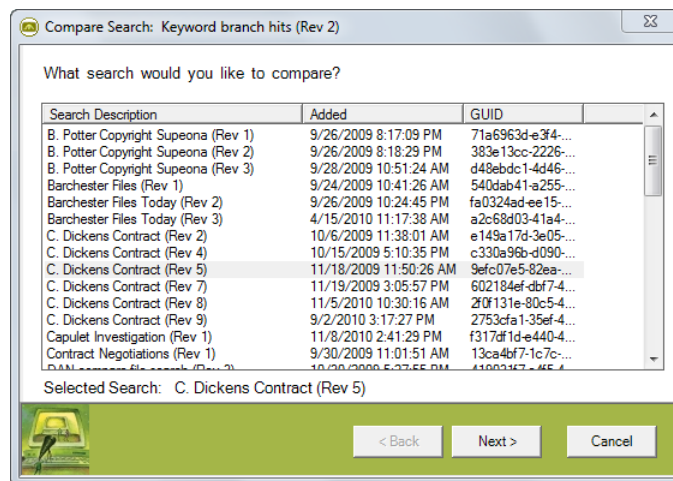
## NEW FEATURES IN VERSION 3.7

- **SharePoint File Searching**

SharePoint has become a major repository for collaborative data within a diverse array of organizations. Discovery Attender 3.7 introduces the ability to search, filter and collect files stored in this popular content management solution.

- **Compare Searches**

This new feature provides the ability to identify items that were found in previous searches. This functionality is intended to save costs and avoid redundant processing.



- **Exchange 2010 Online Archive Support**

To take full advantage of Exchange 2010 functionality, Version 3.7 has improved access to online archives and recovery folders to help with litigation hold. In addition, CAS server authentication is now fully supported.

- **Native NSF Processing**

Loose mail files created with Domino's Lotus Notes can now be searched with the full power of Discovery Attender. Instead of converting NSF files to a PST format, version 3.7 allows users to search, filter, manage and export data to and from native NSF format.

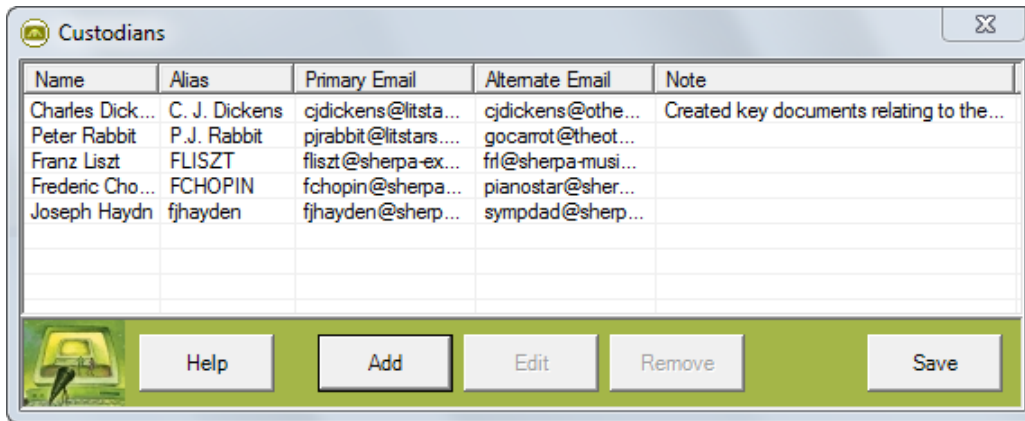
- **MSG Files Searching**

Individual MSG files stored separately from mail stores have traditionally been processed as files. With this new release, users can use email specific criteria such as address, message type or sent date in addition to the standard keyword and date criteria.

# What's New with Discovery Attender®

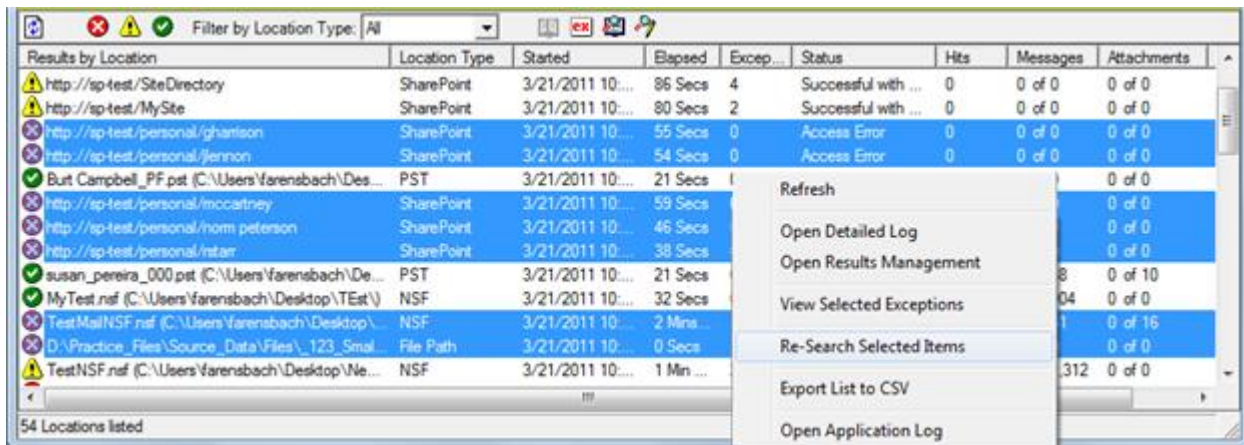
- **Custodian Management**

Custodians are the grouping method of choice for many legal discovery searches. Users now have the option to include custodian details and associate them with data stores within Discovery Attender. With this feature, users can easily identify, manage, export and report on results based on the person from whom the data was collected.



- **Re-search Selected Tasks**

One of the most requested features for Discovery Attender is the ability to rerun a search on just specific tasks. To the delight of users everywhere, this functionality has been added for 3.7.



- **Proximity Improvements**

Proximity operators get a huge boost with double sided nested expressions (e.g. {blue OR green} NEAR {red OR yellow}) and directional support (BEFORE, AFTER).

- **Additional Metadata Collection**

Internal properties from Office documents such as Author, Last Modified By and Last Printed is collected by default and is now available for reporting, sorts and filters. Additionally, SharePoint specific data is also returned to give a broader assessment of the result set.

# What's New with Discovery Attender®

- **Branch Expression Hits**

Another very helpful feature allows users to report on keywords by leaf (i.e. individual keywords), branch (entire expressions) or both. By using delineators to identify a branch expression (i.e. < , >), users can customize the phrases to include in the reports.

The screenshot shows the 'Results for: Keyword branch hits' window. On the left is a tree view with categories like 'By Location', 'By Result Type', 'Keyword', and 'By Branch'. The main area is titled 'Keyword Summary' and contains two tables.

**By Leaf**

Keyword	Message	Attachment	Files	Directory	Total	Percent
blue	28	71	3	0	102	21.79%
day	109	52	7	0	168	35.90%
green	25	45	3	0	73	15.60%
jot*	0	37	0	0	37	7.91%
Judith	0	25	0	0	25	5.34%
night	105	30	0	0	135	28.85%
policy	57	41	15	0	113	24.15%
red	31	56	3	0	90	19.23%
retention	31	24	8	0	63	13.46%
Sherpa	65	162	36	0	263	56.20%
software	92	170	27	0	289	62.02%

**By Branch**

Expression	Message	Attachment	Files	Directory	Total	Percent
Sherpa AND software	65	155	35	0	255	54.49%
retention AND policy	30	19	8	0	57	12.18%
night AND day	91	27	0	0	118	25.21%
Judith AND LIKE("jot*")	0	25	0	0	25	5.34%
green AND yellow	0	2	0	0	2	0.43%
green AND red	1	0	1	0	2	0.43%
green AND (red OR yellow)	0	3	0	0	3	0.64%
blue AND yellow	1	2	0	0	3	0.64%
blue AND red	5	10	0	0	15	3.21%
blue AND (red OR yellow)	0	7	0	0	7	1.50%
(blue OR green) AND yellow	0	3	0	0	3	0.64%
(blue OR green) AND red	2	3	2	0	7	1.50%
(blue OR green) AND (red OR yellow)	18	33	0	0	51	10.90%

Keyword summary loaded

# What's New with Discovery Attender®

## INSTALLATION

Version 3.7 of Discovery Attender can be installed on a clean machine or updated from previous 2.x or 3.x versions using the following guidelines.

- If you have a previous licensed version of the application installed, Discovery Attender will automatically use the old license to validate the new installation. If not, you will be prompted to enter a license once you open a project.
- If you have version 2.x or 3.x installed, please use the upgrade option. Older projects created will not be overwritten; however, they will be upgraded when opened in V3.7 to match the new functionality.
- Upgrades are not supported from versions 1.6x or below. To maintain access to searches in these older formats, install version 3.7 in a side by side configuration. Make sure your installation directory does not overwrite the 1.6x installation.
- To utilize the Sherpa Text Viewer or the Sherpa PreSearch Tool, you must have .Net 3.5 installed.

### **Please Note:**

- SharePoint functionality requires a separate license and a separate component. This component needs to be installed as part of the SharePoint farm that is being searched. The SharePoint component has a separate installer and setup mechanism independent of the main Discovery Attender setup.exe.
- To search NSF files natively, a Lotus Notes Client version 8.51, FP4 or above must be installed.

Please see the *Getting Started Guide* for more information on installation and requirements.