



MailRetriever for Exchange

Open, Browse, Search, Restore, Export & Repair Microsoft Exchange Mailboxes

Advanced Message-Level Restore & eDiscovery for Microsoft Exchange

MailRetriever for Exchange is an affordable and easy-to-use software package for browsing, re-covering, searching, exporting, and analyzing e-mail and mailbox content directly from any unmounted Microsoft Exchange Data Store (EDB). MailRetriever for Exchange can even open and repair corrupted EDB files. With MailRetriever for Exchange, you are never more than just a few clicks away from recovering a message or mailbox. MailRetriever for Exchange eliminates the need for time consuming full-server and EDB restores for recovery of messages.

MailRetriever saves time and money by blowing away traditional recovery windows, eliminating brick-level backups.

With detailed searches in seconds, you're never more than a few clicks away from recovering a lost message, mailbox or Outlook item with this affordable and easy-to-use software package.

Search & Recover E-Mail in Any Microsoft Exchange EDB

MailRetriever for Exchange opens and searches any EDB by field and keyword within mailboxes, messages, calendars, tasks, notes and folders. The results can be restored to the original location, a recovery folder or exported to a PST file for portability in just seconds. Browse or search the EDB or a specific mailbox to locate any items (messages, tasks, calendars) and then perform a simple restore. You can perform a partial or full mailbox restore as well with the same ease.

Open Corrupt EDBs

MailRetriever for Exchange opens EDBs plagued with corruption that do not mount on the Exchange server and are therefore traditionally useless. MailRetriever for Exchange branches around the corruption, healing the EDB so that it mounts with zero or minimal data loss, depending on the type of corruption. Additionally, MailRetriever for Exchange automatically rolls the log files associated with the EDB.

Perform eDiscovery & Output to a PST for Case Analysis

MailRetriever for Exchange quickly identifies e-mail for ediscovery. Simply search for messages containing a keyword/phrase/username and MailRetriever for Exchange scans the entire EDB for messages that meet the selected criteria. The results can then be exported to a folder or PST which satisfies the "native file format" requirement for legal and compliance eDiscovery.

Eliminate Brick-Level Mailbox Backups

Restore deleted, lost and archived e-mail from any unmounted EDB without the need to perform expensive and time consuming brick-level backups. MailRetriever for Exchange eliminates the need to run EXMERGE or Recovery Storage Groups.

Save Disk Space & Servers

MailRetriever for Exchange requires less disk space for message-level recovery and eliminates the need to stand up a separate Exchange server for restoring messages.



Differential Restores

Differential restores synchronize the unmounted EDB with the online server. Use differentials to synchronize the database after rollbacks, restores from a backup, or to populate an empty database.

View Individual Messages & Outlook Items

With MailRetriever for Exchange, you can view a message's contents, including all the message attributes. Additionally, you have full access to calendar items, tasks, notes and more.

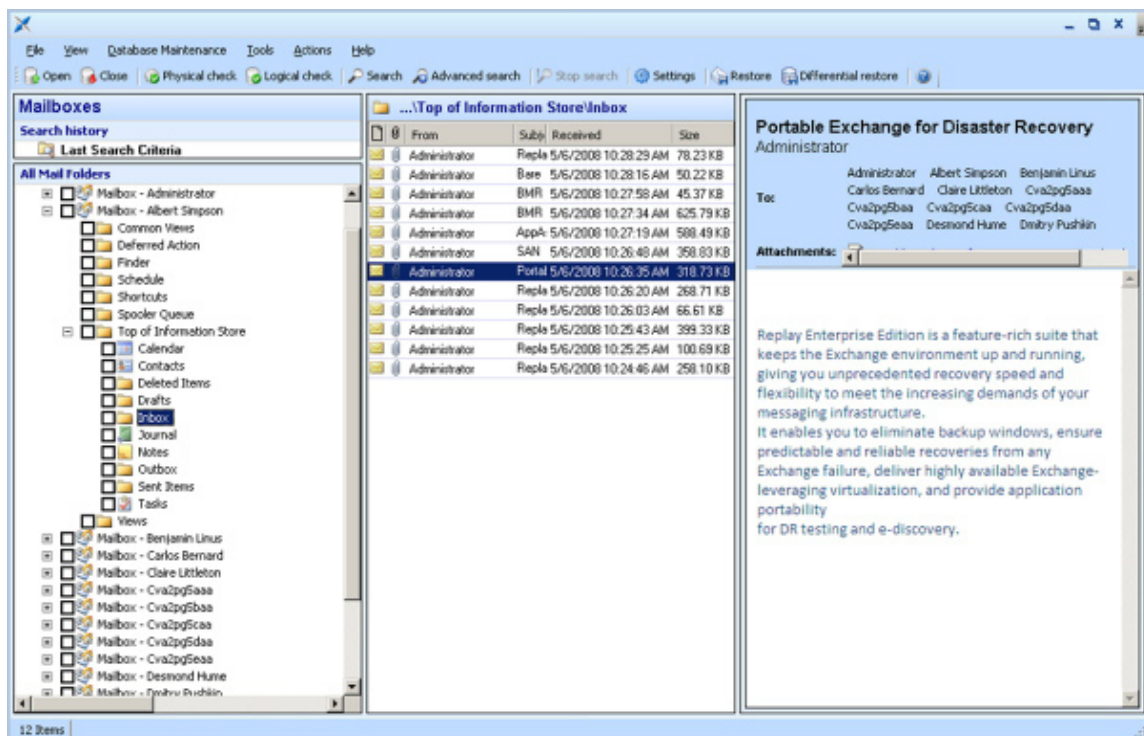
"Exchange downtime and associated recovery time wastes on average hundreds of hours a year in unscheduled downtime and lost productivity."

Perform Data Store Integrity Checks

Check an EDB for corruption and pinpoint issues before they become more severe. MailRetriever for Exchange performs both physical and logical integrity checks on EDBs.

Mountability Test – Performs an offline ESE mount of the database and rolls all of the logs to ensure that the data store can be mounted.

Physical Check – Performs a page-by-page validation of the EDB.



The main screen for browsing mailboxes, messages and Outlook items in MailRetriever for Exchange.

AppAssure Software, Inc.
1925 Isaac Newton Square East Ste 440
Reston, VA 20190
703.796.1706 fax
703-547-8686 phone

For more information or to download your free trial visit us online: www.appassure.com

© 2009 AppAssure Software. All rights reserved. The information contained in this datasheet is subject to change without notice. AppAssure Software assumes no responsibility for any errors that may appear. AppAssure Software and the AppAssure Software logo are all trademarks of AppAssure Software. All other trademarks and registered trademarks are the property of their respective owners.

